

RECEIVED  
LARAMIE COUNTY  
CHEYENNE, WY.

'86 OCT 14 AM 11:51

CERTIFIED LAND CORNER RECORDATION

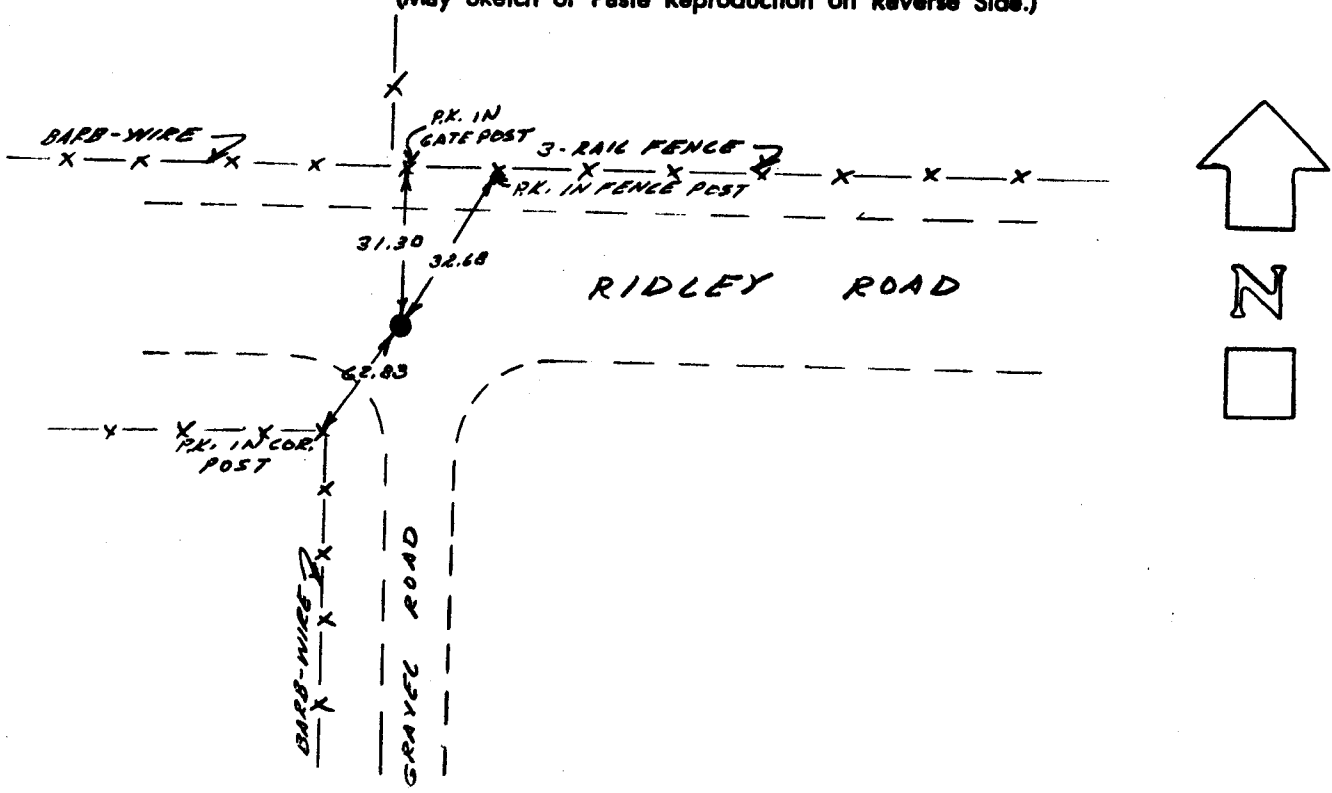
DESCRIPTION OF CORNER EVIDENCE FOUND, AND ORIGINAL RECORD (if known)

T.15N, 3 | R. 10 | 11 R.67W,  
SET: 1 1/2" X 18" LONG REBAR WITH ALUMINUM CAP PROJECTING 0.5 FEET BELOW SURFACE STAMPED AS STAMPED BELOW.

DESCRIPTION OF MONUMENT AND ACCESSORIES ESTABLISHED TO PERPETUATE THE ORIGINAL LOCATION OF THIS CORNER:

SEE TIES BELOW

SKETCH, WITH COURSE AND DISTANCE TO ADJACENT CORNER IF DETERMINED IN THIS SURVEY. (May Sketch or Paste Reproduction on Reverse Side.)



I, JWIN A. STEIL certify that I have carefully performed or reviewed the work done on the diagrammed corner as reported on this recordation form and approve the same.

Jwin A. Steil L.S. 2500  
Signature of Surveyor Registration No.

STATE OF WYOMING,  
Office of Clerk and Recorder,  
County of Laramie

This "corner record" was filed for record on the 14 day of Oct, 1986, was noted on the cross-index plat and is assigned page No. \_\_\_\_\_, in book No. \_\_\_\_\_

Joseph C. [Signature]  
County Official  
Cross Index No. E-17 T. 15 R. 67 Mer.  
\_\_\_\_\_ T. \_\_\_\_\_ R. \_\_\_\_\_ Mer.  
\_\_\_\_\_ T. \_\_\_\_\_ R. \_\_\_\_\_ Mer.  
\_\_\_\_\_ T. \_\_\_\_\_ R. \_\_\_\_\_ Mer.  
\_\_\_\_\_ T. \_\_\_\_\_ R. \_\_\_\_\_ Mer.  
\_\_\_\_\_ T. \_\_\_\_\_ R. \_\_\_\_\_ Mer.  
\_\_\_\_\_ T. \_\_\_\_\_ R. \_\_\_\_\_ Mer.